



*Making Lives, Waking Hearts  
To serve the coming days*

# Welcome to St Andrew's Junior School P3 & 4 Meet The Parent



# Agenda

- Introduction of Key Personnel
- Working with the End in Mind
- Key Updates
  - Use of Computers & Cyberwellness
  - School Based Assessments & Removal of Mid Year Examinations
  - Subject Based Banding for P4
  - Class Placement from P4 to P5
- Important Reminders
  - Partnership with Parents



P3 & 4 Meet The Parent

INTRODUCTION OF KEY PERSONNEL

# Key Personnels

<b>Vice-Principal</b>	Mrs Karen Ivicz karen_lim@schools.gov.sg	<b>Vice-Principal (Administration)</b>	Mr Boey Weng Yue boey_weng_yue@schools.gov.sg
<b>Year Head P3 / P4</b>	Mr Yeo Peng Seng yeo_peng_seng@moe.edu.sg		
<b>HOD English</b>	Mrs Tan Siew Mei tan_siew_mei@moe.edu.sg	<b>HOD Mother Tongue</b>	Ms Lin Jingya lin_jingya@moe.edu.sg
<b>HOD Mathematics</b>	Mrs Pauline Poon quek_pauline@moe.edu.sg	<b>HOD Science &amp; Environment</b>	Mr Kevin Ng ng_min_keong_kevin@moe.edu.sg
<b>HOD Aesthetics, PE &amp; CCA</b>	Mr Khairil Anuar khairil_anuar@moe.edu.sg	<b>HOD Character &amp; Citizenship Education</b>	Mrs Angela Lim angela_lim@moe.edu.sg
<b>HOD Student Management</b>	Mrs Andreatte Loh lucy_andreatte_yip@moe.edu.sg	<b>HOD Educational Technology</b>	Mr Lee Lin Shen lee_lin_shen@moe.edu.sg
<b>Senior School Counsellor</b>	Mr Dennis Tan Lai Hoe dennis_tan_lai_hoe@moe.edu.sg	<b>School Counsellor</b>	Mrs Vivienne John vivienne_voon_siew_ken@moe.edu.sg
<b>Subject Head (Special Educational Needs)</b>	Mrs Joanne Yak joanne_yak@moe.edu.sg	<b>Lead Special Educational Needs Officer</b>	Ms Nur Afni nur_afni_mohamed_amin@moe.edu.sg
<b>Special Educational Needs Officer</b>	Mdm Tan Soh Kwan tan_soh_kwan@moe.edu.sg	<b>Special Educational Needs Officer</b>	Ms Gayathri Naidu gayathri_naidu_r_ganasan@moe.edu.sg

P3 & 4 Meet The Parent

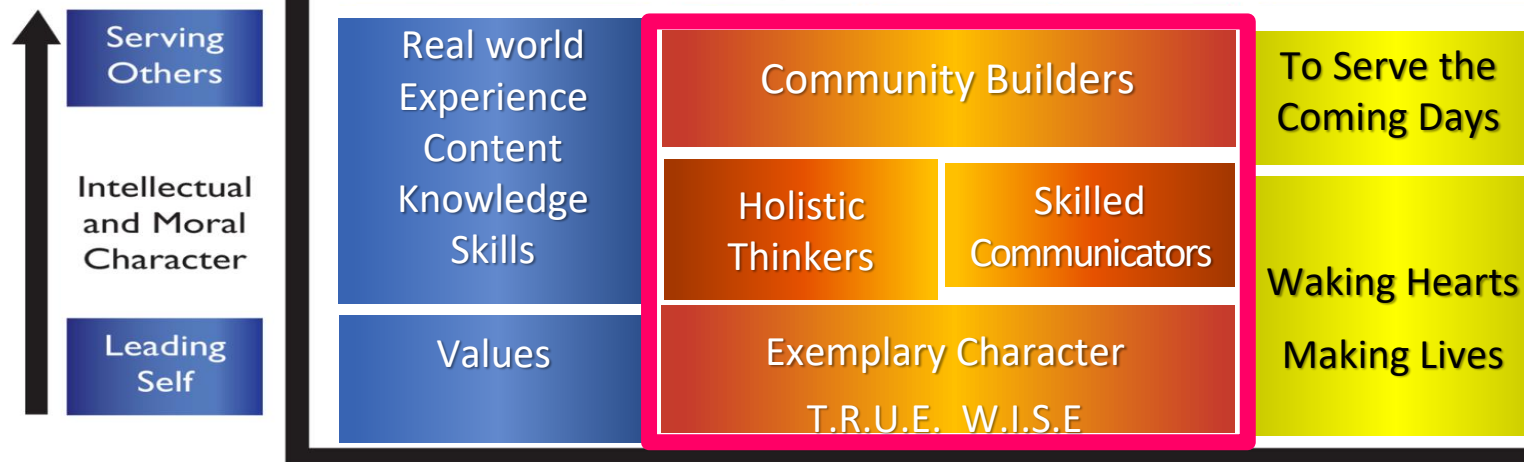
WORKING WITH THE END IN MIND

# St Andrew's Junior School Education Model

St Andrew's  
Junior School



Mission, Vision and Values  
Home of Servant Leaders  
Who bring Life to the Nations



P3 & 4 Meet The Parent

USE OF COMPUTERS

# Key Objectives of 1:1 Computing

- In line with MOE, SAJS strives to develop **WELL-ROUNDED INDIVIDUALS** who are **PASSIONATE LIFELONG LEARNERS**.
- **WELL-ROUNDED INDIVIDUALS**
  - Develop students holistically to **prepare them for work and life**.
  - Nurture students with skills and knowledge to be **innovative and adaptable**.
- **PASSIONATE LIFELONG LEARNERS**
  - Help students discover the **joy of learning** to cultivate a positive attitude towards **lifelong learning** through:
    - Stimulate curiosity
    - Make learning authentic and relevant
    - Cultivate self-directed learners
    - Acquire skills to continue learning beyond school





# Implementation of 1:1 Computing

- School will provide the laptops.
- MOE Laptops will be charged and stored in school and cannot be brought home.
- All resources will be kept online to ensure students can access the materials using any computing devices, anywhere with Internet.



# Frequency of Use

- Use of use of ICT is subject & content dependent
- Content-Pedagogy-Assessment model helps to moderate use to about 50% of the curriculum time. For e.g.
  - Teacher-led introduction to topic
  - Self-directed learning with computer
  - Collaborative learning to deepen understanding & highlight misconceptions
  - Teacher-led consolidation and summary of learning



# Examples of ICT in Lessons

## Without 1 to 1

- Use of Butcher Sheets for discussion
- Use of worksheets
- Use of Q & A verbally
- Teacher is main source of information
- Feedback lag by 1 person

## With 1 to 1

- Use Google doc, forms to share ideas and collaborate
- Use of online resources, E-books, animations, videos for learning
- Use of quizzes online
- Immediate feedback and can be from multiple persons
- Use of Web 2.0 to aid collaboration and self-directed learning



# Cyber Wellness

- Free Access
- Hours online
- Safety online



P3 & 4 Meet The Parent

KEY UPDATES FOR P3 & 4

- REMOVAL OF MID YEAR EXAMS
- SCHOOL BASED ASSESSMENT

# School-Based Assessment

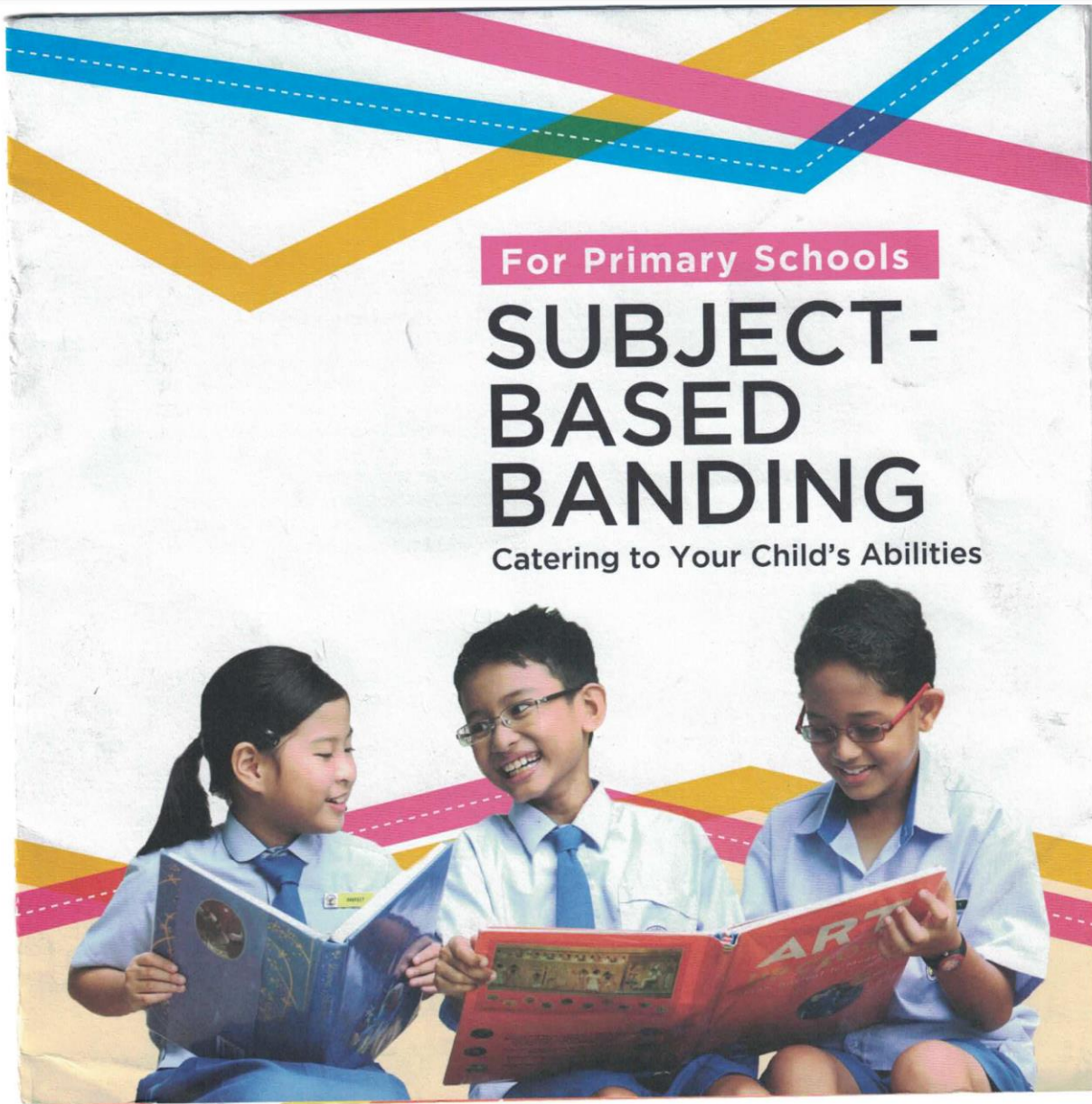
- Removal of Mid-Year Examination for P3-6 wef 2023
- Weighted Assessments (WA) will be conducted during the term
- Reduce the over-emphasis on academic grades



P3 & 4 Meet The Parent

KEY UPDATES FOR P4

- SUBJECT BASED BANDING



Every child is Unique  
with different  
aptitude,  
capabilities &  
talents.

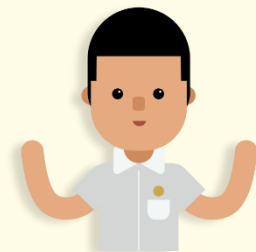
Focus on the  
Strength and  
Potential in  
subjects child is  
strong in.

Build on  
Fundamentals in  
subjects child  
needs support in.



# SUBJECT-BASED BANDING (PRIMARY)

- Schools will continue to recommend based on the following:
  - Student's aptitude, motivation and performance in each subject;
  - Student's ability to cope with a particular subject combination; and
  - Whether the subject combination focuses sufficiently on literacy and numeracy, and facilitates the student's articulation to secondary school and beyond.
- Offering subjects at Foundation level is not a disadvantage to the students. It enables them to focus on building up strong fundamentals in these subjects and better prepares them for progression to secondary school.
- The new PSLE scoring system will not change the considerations for deciding on a student's subject combination.



## HOW DOES SUBJECT-BASED BANDING (PRI) WORK?

### @ PRIMARY 4

**Student sits for school-based examinations**

School recommends a subject combination based on the student's results.

Parents fill up an option form indicating the preferred combination.

### @ PRIMARY 5

**Student takes subject combination chosen by parents**

English Language, Mathematics, Science and Mother Tongue Language are available at standard and foundation levels.

Higher Mother Tongue Language is also available.

School assesses student's ability to cope with the current subject combination at the end of the year. Adjustments to the number of standard and foundation subjects can be made, if necessary.

### @ PRIMARY 6

**Student takes subject combination decided by his school and sits for the Primary School Leaving Examination (PSLE) at the end of Primary 6.**

# School-Based Assessment

Pass 3-4 subjects	4 Standard	English Language Mother Tongue Language Mathematics Science
Pass 4 Subjects & Does very well for MTL	4 Standard & HMTL	Higher Mother Tongue Language may also be offered
Pass 2 Subjects or less	<ul style="list-style-type: none"> <li>• 4 standard subjects</li> <li>• 3 standard subjects + 1 foundation subject</li> <li>• 2 standard subjects + 2 foundation subjects</li> <li>• 1 standard subject + 3 foundation subjects</li> <li>• 4 foundation subjects</li> </ul>	



P3 & 4 Meet The Parent

SUPPORT FOR P3 & 4 - PARENTAL  
SUPPORT

# MOE's Partnership Framework Principles

- **\* Trust is the foundation \***
- Remember the child
- Understand our shared responsibilities
- Seek common ground
- Together, we work towards common goals

# Guiding Principles for School-Home Partnership

1. Students succeed when schools and parents work hand in hand to support students in learning self-management skills, taking responsibility and building resilience.
2. Mutual respect and trust forms the strong foundation for positive engagement between schools and parents.

## Managing self

We want to enable our Saints to manage their emotions and actions independently and respond to changes as well as challenges anchored on sound values so that they can thrive in the VUCA future.

## Relating to others

We want to teach our Saints to be respectful and have integrity and empathy when interacting with others.

## Developing good habits

We want to nurture our Saints to be self-directed learners with good habits and take responsibility for their own learning.

## Working with the school to know and support our Saint

We want to develop and strengthen mutual understanding, respect and trust between the school and yourself for the benefit of our Saints.



# Help your child succeed in life

Our children do best when schools and parents work hand in hand to support them. Here are some tips to make this happen...

## Work with the school to know and support your child

- Have regular conversations with teachers in both academic and non-academic areas – this will help you better guide your child's development.
- Check the teachers' preferred mode of communication – they are not required to share their mobile numbers.
- Understand that teachers may not be able to respond to your queries immediately.

## Help your child relate to others

- Work with the teachers to help your child respect differences and resolve disagreements amicably.
- Let the school verify the facts in any incident before taking action to ensure a fair, objective outcome for all parties.

## Help your child develop good habits

- Create a conducive home environment for your child to enjoy reading and to finish his/her homework by himself/herself.
- Encourage your child to live a healthy, balanced life with time for sleep and play.

## Help your child manage himself/herself

- Guide your child in managing his/her time.
- Encourage your child to help out with household chores.



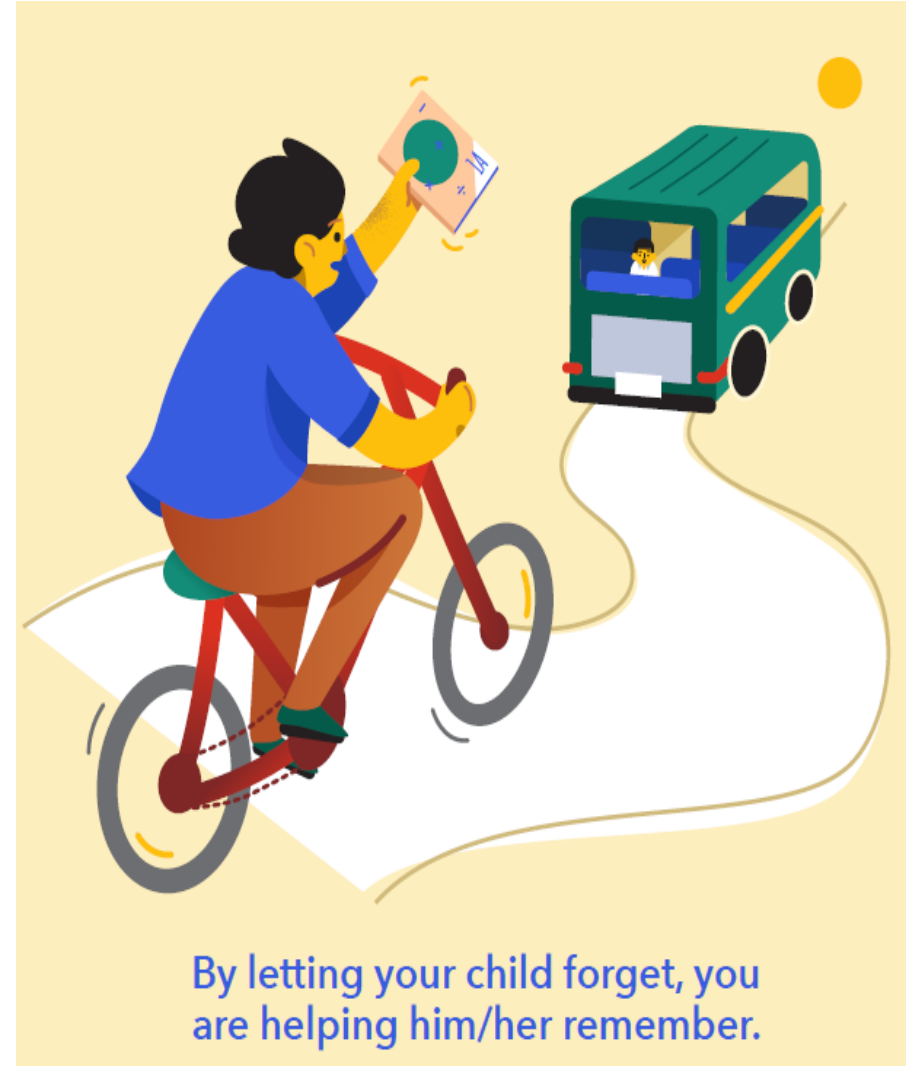
## Managing Self: Develop Saints' Ownership & Independence in learning.

Do not rely on teachers to update you on homework and admin matters.



## Managing Self: Develop Saints' Responsibility of taking care of their things

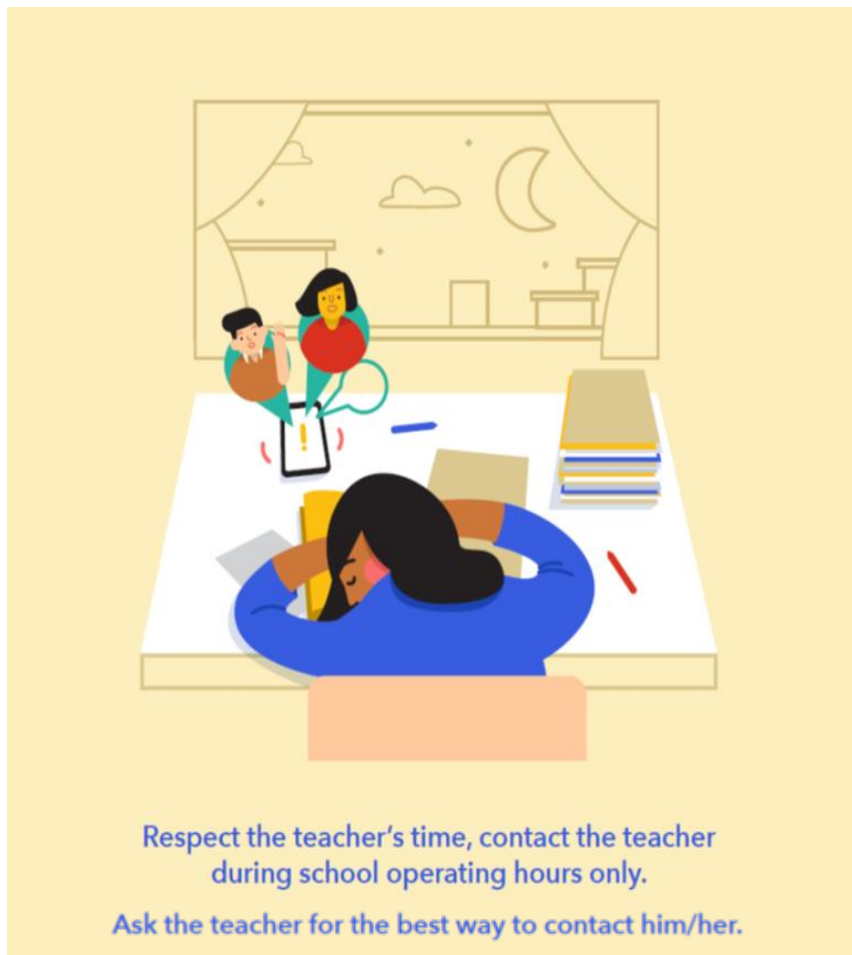
Do not bring items to school on child's behalf.





# Working with the school to know and support your child

We want to develop and strengthen **mutual understanding, respect and trust** between the school and parents for the benefit of your child.



ST ANDREW'S JUNIOR SCHOOL

Personal Organiser 2022

1862

*Once a Saint, always a Saint*



Name : \_\_\_\_\_

Class : \_\_\_\_\_

## 13.6 GUIDELINES ON PHOTOGRAPHY/ VIDEOGRAPHY

Photograph(s) or video image(s) of Saints and their parents/guardians may be captured during school activities and events such as classroom lessons, CCA, school camps, school concerts. The school reserves the right to use and publish such photographs and/ or video recordings in school publications, website, social media channels, and other communication channels.

## Managing Self: Develop Saints' Ability to Relate to Others

**Do not be quick to judge and blame others. Help our child to resolve differences amicably and take responsibility of their own actions.**

**Help your child relate to others**

- Work with the teachers to help your child respect differences and resolve disagreements amicably.
- Let the school verify the facts in any incident before taking action to ensure a fair, objective outcome for all parties.

An illustration showing a man in a red shirt and green pants, and a woman in a green shirt and yellow pants, both holding books. They are standing and talking to two children in white shirts and maroon shorts. The background is a stylized landscape with a green hill and a blue sky.

“**EDUCATING** the mind  
without **EDUCATING**  
the heart is no education  
at all.”

Aristotle

Sunday - Sep 9, 2012(12:57 pm)

**The most important thing is  
CHARACTER...**

**Each tree is recognized by its own fruit.**

**A good man brings good things out of the  
good stored up in his heart. For the mouth  
speaks what the heart is full of.**

**Luke 6:44-45**

**Thank you for your support!**

